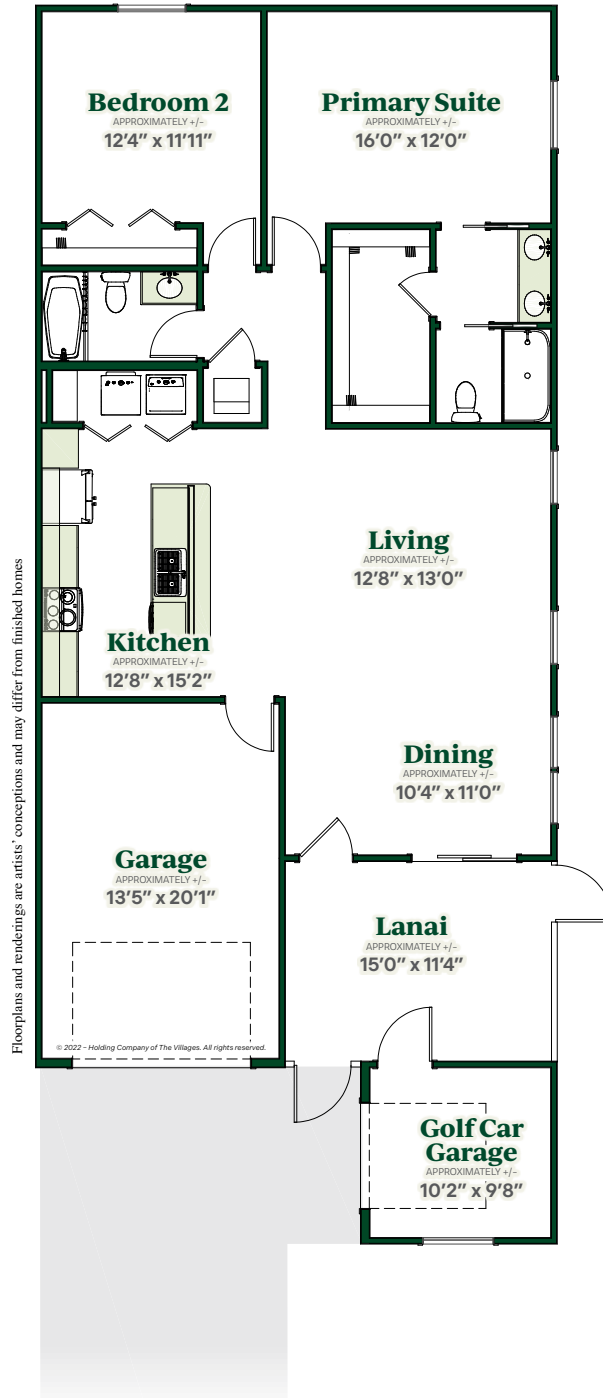


# Emerald

PATIO VILLA



**2 Beds | 2 Baths | 1870 Total Sq. Ft. | 1295 Living Sq. Ft.**  
**1-Car + Golf Car Garage | Frame Construction**



The Villages®

# Patio Villa SERIES

---

## Interior

- Central Air Conditioning and Heat
- Water Heater
- Smoke Detection System
- Wiring for Data and Cable
- Ceiling Fan Outlets in Selected Rooms
- Interior Light Fixtures
- Lighting
- Single Pole Switches
- Wood Cabinetry
- Interior Doors

## Kitchen

- Stainless Steel Appliances: Refrigerator, Range, Microwave Over Range, and Dishwasher
- Garbage Disposal
- Double Bowl Sink with Faucet
- Wood Cabinets

## Bath

- Bathtubs, Sinks, and Toilets
- Faucets and Shower Accessories
- Molded Tubs and Showers
- Towel Bars and Tissue Holders
- Bath Exhaust Fans

## Structural

- Frame Construction with Vinyl Siding
- House Wrap and R-11 Wall Insulation

## Exterior

- Architectural Shingles
- R-38 Ceiling Insulation
- Insulated Windows
- Fiberglass Entry Doors
- Garage Door with Electric Opener
- Underground Utilities
- Push Button Door Chime
- Weatherproof Electrical Outlets
- Exterior Hose Bibs
- Landscaping with WIFI Capable Controller and Rain-Click Sensor Irrigation System
- St. Augustine Grass
- Concrete Driveway and Sidewalk
- Covered Entryway
- Exterior Lighting at Entry
- Lighting and Fans

---

## A variety of popular features available in some homes:

- Raised Panel Interior Doors
- Window Treatments
- Cathedral/Volume Ceilings
- Ceiling Fans
- Screen Lanai
- Washer/Dryer

**The Villages**<sup>®</sup>

**352-753-6700 | TheVillages.com**  
1000 Lake Sumter Landing | The Villages, FL

