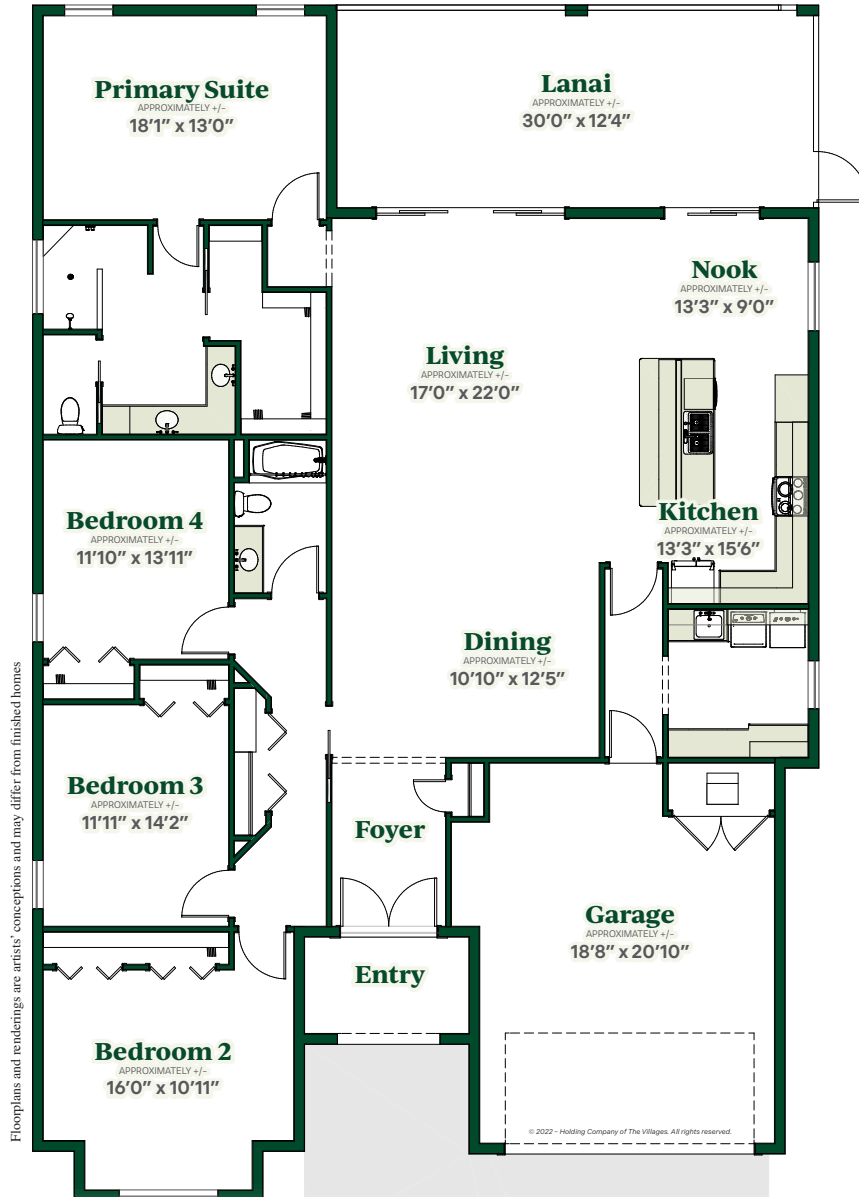


Swallow

DESIGNER HOME



4 Beds | 2 Baths | 3560 Total Sq. Ft. | 2590 Living Sq. Ft.
2-Car Garage | Concrete Construction



Designer Home SERIES

Interior

- Central Air Conditioning and Heat
- Water Heater
- Smoke Detection System
- Wiring for Data and Cable
- Ceiling Fans in Select Rooms
- Laundry Tub with Faucet
- Rocker Switches
- Interior Light Fixtures
- Wood Cabinetry
- Interior Doors

Kitchen

- Stainless Steel Appliances: Refrigerator, Range, Microwave Over Range, and Dishwasher
- Garbage Disposal
- Double Bowl Sink with Faucet
- Wood Cabinets

Bath

- Bathtubs, Sinks and Toilets
- Faucets and Shower Accessories
- Ceramic Tile Shower - Primary Bath
- Ceramic Tile Tub Wall Surround - Guest Bath
- Towel Bars and Tissue Holders
- Bath Exhaust Fans

Structural

- Concrete Construction with Painted Cementitious Finish and Interior Foam Board Insulation

Exterior

- Architectural Shingles
- R-38 Ceiling Insulation
- Insulated Windows
- Fiberglass Entry Doors
- Screen Lanai
- Garage Door with Electric Opener
- Underground Utilities
- Push Button Door Chime
- Weatherproof Electrical Outlets
- Front Yard Lamp Post
- Exterior Hose Bibs
- Landscaping with WIFI Capable Controller and Rain-Click Sensor Irrigation System
- St. Augustine Grass
- Concrete Driveway and Sidewalk
- Covered Entryway
- Exterior Lighting and Fans

A variety of popular features available in some homes:

- Golf Car Garage
- Screen Enclosed Pools/Spas
- Window Treatments
- Quartz Countertops
- Washer/Dryer
- Tile Flooring

The Villages[®]

352-753-6700 | TheVillages.com
1000 Lake Sumter Landing | The Villages, FL

