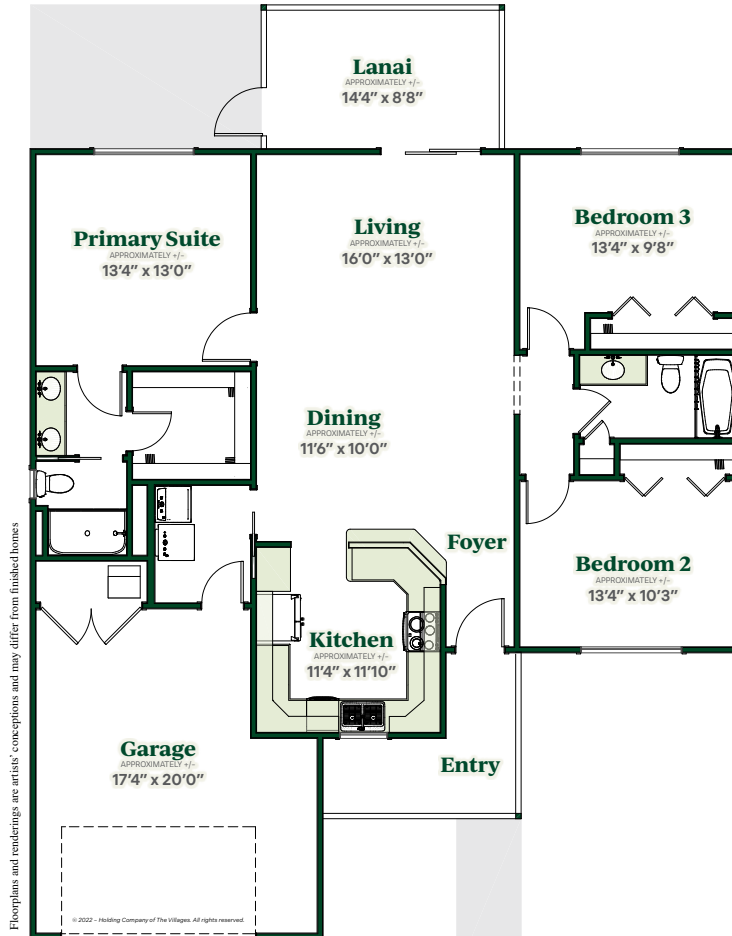


Sandpiper

COTTAGE HOME



3 Beds | 2 Baths | 1946 Total Sq. Ft. | 1370 Living Sq. Ft.
1.5-Car Garage | Frame Construction



The Villages®

Cottage Home SERIES

Interior

- Central Air Conditioning and Heat
- Water Heater
- Smoke Detection System
- Wiring for Data and Cable
- Ceiling Fan Outlets in Selected Rooms
- Interior Light Fixtures
- Single Pole Switches
- Lighting and Fans
- Interior Doors
- Wood Cabinetry

Kitchen

- Stainless Steel Appliances: Refrigerator, Range, Microwave Over Range, and Dishwasher
- Garbage Disposal
- Wood Cabinets
- Double Bowl Sink with Faucet

Bath

- Bathtubs, Sinks, and Toilets
- Faucets and Shower Accessories
- Molded Tubs and Showers
- Towel Bars and Tissue Holders
- Bath Exhaust Fans

Structural

- Frame Construction with Vinyl Siding
- House Wrap and R-11 Wall Insulation

Exterior

- Architectural Shingles
- R-38 Ceiling Insulation
- Insulated Windows
- Fiberglass Entry Doors
- Screen Lanai
- Garage Door with Electric Opener
- Underground Utilities
- Push Button Door Chime
- Weatherproof Electrical Outlets
- Front Yard Lamp Post
- Exterior Hose Bib
- Landscaping with WIFI Capable Controller and Rain-Click Sensor Irrigation System
- St. Augustine Grass
- Lighting and Fans
- Concrete Driveway and Sidewalk
- Covered Entryway
- Exterior Lighting at Entry

A variety of popular features available in some homes:

- Tile Flooring
- Window Treatments
- Ceiling Fans
- Granite, Quartz or Corian Countertops
- Golf Car Garage
- Washer/Dryer

The Villages[®]

352-753-6700 | TheVillages.com
1000 Lake Sumter Landing | The Villages, FL

